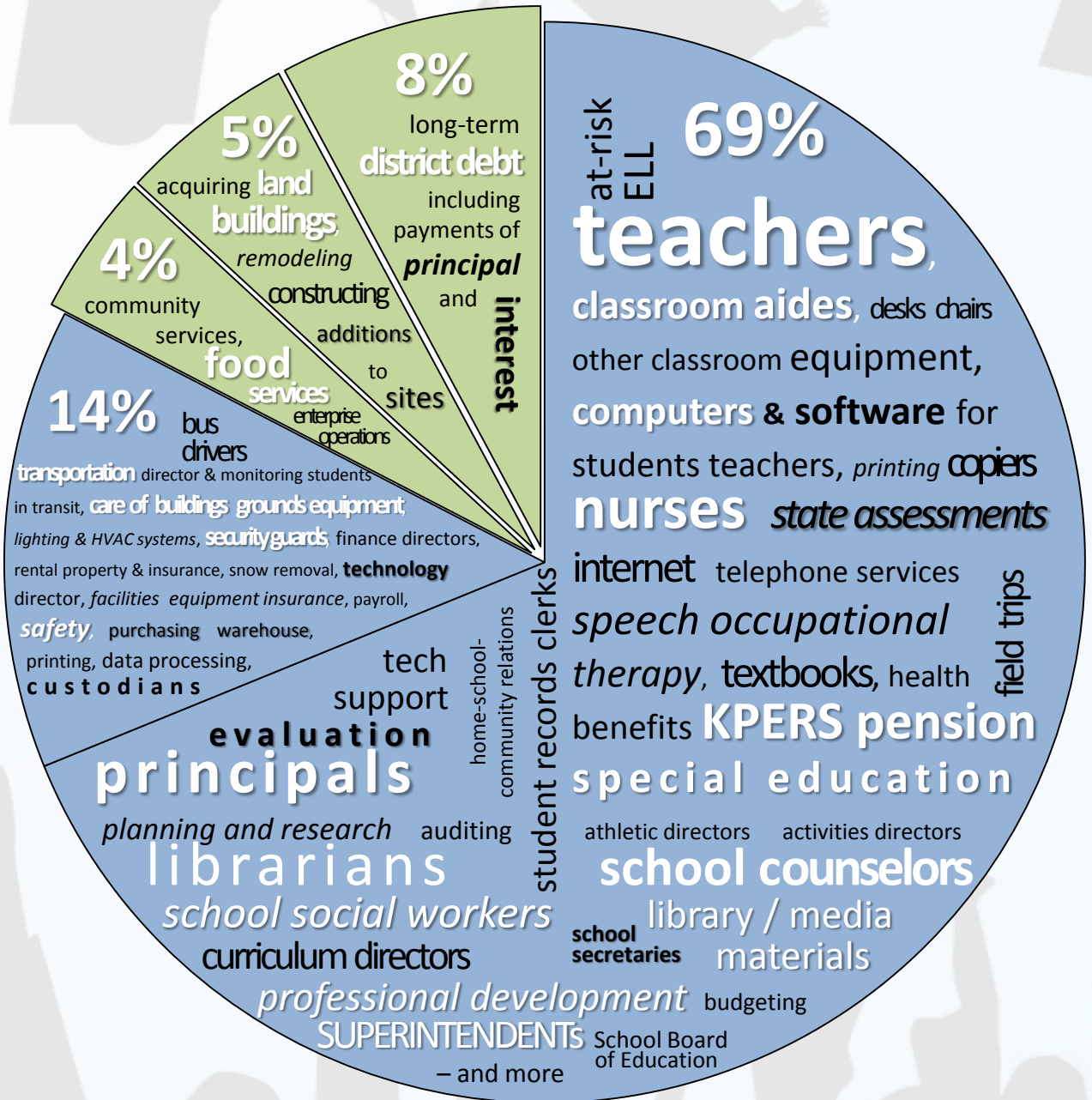


# How Kansas Public School Funds are Used

Total K-12 Per Pupil Expenditure  
\$12,656 (2012)



Sources: Kansas Department of Education (2012; 2013)  
See also KS PTA Infographic - The School Funding Choice (2013)

advocacy advocacy advocacy advocacy advocacy advocacy



Publication of Kansas PTA Advocacy Leadership (2013)  
www.kansas-pta-legislative.org  
Brian Hogsett bhogsett12@gmail.com  
Mary Sinclair, PhD mfoxsinclair@gmail.com

everychild.onevoice.